



TK International  
020 7794 8700  
www.t-k.co.uk

Residential Sales  
Residential Lettings  
Property Management

Sales Office:  
9 Heath Street  
Hampstead  
London NW3 6TP  
E: sales@t-k.co.uk

Lettings Office:  
16-18 Heath Street  
Hampstead  
London NW3 6TE  
E: lettings@t-k.co.uk

tk.international  
TK International  
TK International

Est.  
1998



## Frognal Rise Hampstead Village NW3

Set on the first floor of a purpose built block situated within arguably Hampstead's most prestigious landmark development, a bright and beautifully presented two bedroom, two bathroom apartment with secure underground parking and a balcony, benefiting from use of extensive communal gardens, an impeccably maintained communal swimming pool and gymnasium, and 24 hour portage.

This lateral apartment measures approx. 1,148 sq ft (107 sq m) and enjoys exceptional natural light. Further benefits include sash windows overlooking the communal grounds. Both double bedrooms comprise built in wardrobes with a spacious ensuite to the master bedroom.

Highgrove Point forms part of the Mount Vernon Estate and is widely considered to be the most sought after development in NW3. Located just moments from the many fashionable boutiques, cafes and art galleries in Hampstead Village, in addition to Hampstead Underground Station (Northern Line).

**£1,900,000**

**SOLE AGENT**

**Share of Freehold**







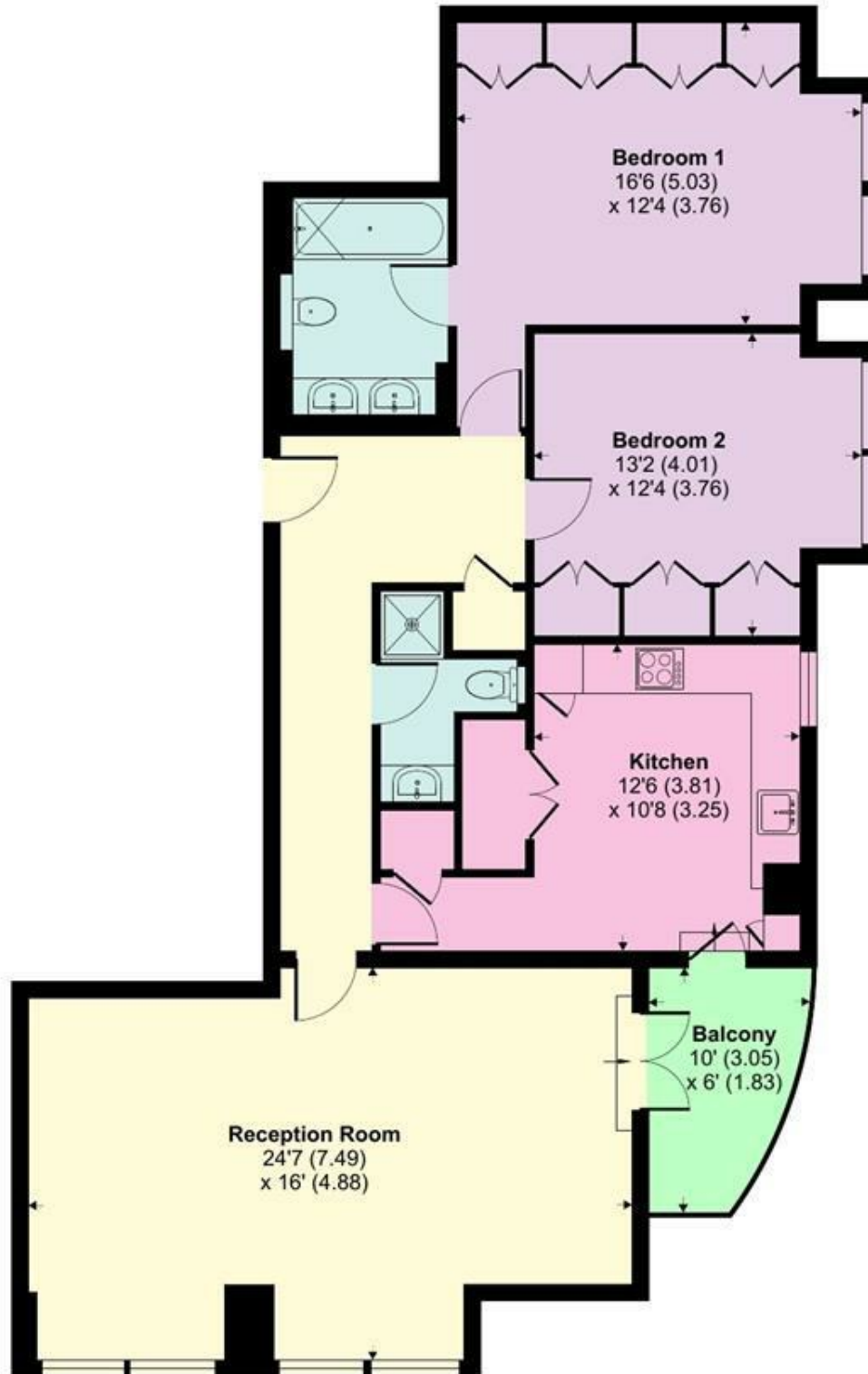




# Highgrove Point, Frognal Rise, London, NW3

Approximate Area = 1157 sq ft / 107.4 sq m

For identification only - Not to scale



**SECOND FLOOR**



Floor plan produced in accordance with RICS Property Measurement Standards incorporating International Property Measurement Standards (IPMS2 Residential). © nichecom 2022. Produced for TK (Hampstead) Ltd. REF: 1030198.